

PISA SOFA BED OPERATING INSTRUCTIONS

SOFA BED OPERATING INSTRUCTIONS

Thank you for purchasing this Sofa Bed. Please read the instructions carefully before use to ensure safe and satisfactory operation of this product.

SAFETY INSTRUCTIONS

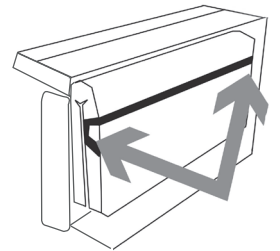
This product is **HEAVY**, it should be assembled as near as possible to the point of use. TAKE CARE WHEN LIFTING to avoid personal injury and (or) damage to the product. Ideally two people should carry out the arm installation.

Read this leaflet in full before carrying out the instructions.

STEP BY STEP INSTRUCTIONS

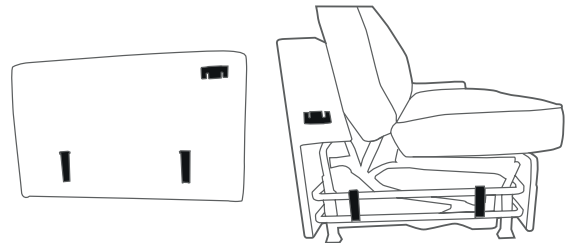
1. REMOVE TRANSIT TIE

To avoid damage in transit the mechanism is secured with a tie. This **MUST** be removed before carrying out the opening procedure. To do this lay the Sofa Bed on to its back on a flat surface. Remove the tie which is in the position shown here.



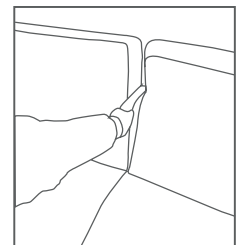
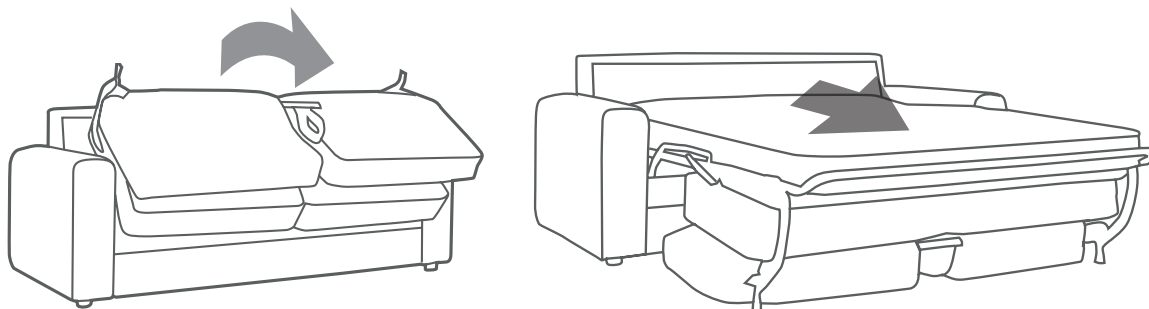
2. ASSEMBLE THE ARMS

Carefully line up the 3 arm brackets shown with the 3 brackets on the sofa bed. Lower the arm on to the brackets. If you meet resistance **STOP**, lift the arm off and start again. It is important to lower the arm in an upright position and not at an angle. Once engaged properly there should be no movement in the arm. Repeat the above for the other arm.



3. OPENING THE SOFA BED

Reach through the two back cushions and locate the fabric strap. Pull firmly towards you to extend the mechanism. Fully extend the mechanism to the sleeping position.



4. TO CLOSE THE MECHANISM

Simply reverse the above procedure. **This process should be carried out with the flat of the hand keeping fingers clear of moving parts.**

GENERAL WARNINGS:

Never drag when moving, always lift the sofa bed. Please take care when handling or moving the furniture as careless handling may cause damage or injury. No liability will be accepted for damage or injury caused by failure to follow these instructions.

PILE FABRICS:

These are beautiful fabrics that will generally perform well, but it should be borne in mind that ALL pile fabrics are subject to creasing, crushing and shading and the colour may vary dependent on the direction of the pile. This is not regarded as a complaint but a characteristic of the cloth.

SPECIFIC WARNINGS FOR HEAVY ITEMS:

Before moving this sofa bed to a new location it is imperative that mechanism transit ties are used to avoid personal injury or damage to the furniture.

PLEASE KEEP THESE INSTRUCTIONS FOR FUTURE REFERENCE

